

# Single Pole Connectors

Project Name:	Prepared By:
Project Number:	Date:
Catalog Number:	Type:

## Cam-Lok™ J-Series E1015 Accessories

Cable Size #8 – #4 AWG  
600V AC/DC, Up to 150A Continuous  
NEMA 3R

### J-Series E1015, Rubber

#### FEATURES

- Double cam principle provides a positive, vibration-proof connection.
- Self-compensating for wear.
- No moving contact surfaces, eliminating arcing or burning.
- Superior electro-mechanical connections.
- Locked contacts will withstand a pulling force of 1,000 lbs.
- 1/3 of a turn assures a high pressure contact approaching 600 lbs. per sq. in. providing minimum resistance.
- Contacts carefully machined from a high conductivity brass to a smooth sliding fit, even before to locking.
- Watertight neoprene insulators molded from colorfast material, color-coded for easy phase identification.
- Recessed contacts protected by insulating jacket that extends beyond contact ends for safety.

#### THREE WAY "T" CONNECTORS

COLOR	PARALLELING "T" COMPLETE PART NO. M-M-F	TAPPING "T" COMPLETE PART NO. M-F-F
BLACK	E1015-2324	E1015-2312
RED	E1015-2326	E1015-2314
GREEN	E1015-2328	E1015-2316
WHITE	E1015-2329	E1015-2317
BLUE	E1015-2348	E1015-2350
BROWN	E1015-2342	E1015-2370
ORANGE	E1015-2327	E1015-2315
YELLOW	E1015-2325	E1015-2313

#### ADAPTORS

DOUBLE FEMALE COMPLETE PART NO.	DOUBLE MALE COMPLETE PART NO.	MALE - FEMALE COMPLETE PART NO.
E1015-2352	E1015-2362	E1015-2336
E1015-2354	E1015-2364	E1015-2338
E1015-2356	E1015-2366	E1015-2340
E1015-2357	E1015-2367	E1015-2341
E1015-2358	E1015-2368	E1015-2361
E1015-2359	E1015-2369	E1015-2371
E1015-2355	E1015-2365	E1015-2339
E1015-2353	E1015-2363	E1015-2337



E1015-2314

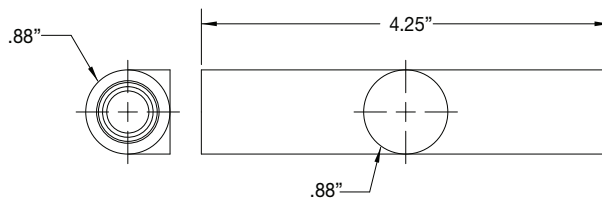
#### PROTECTIVE CAPS

COLOR	MALE	FEMALE
BLACK	A100793-1	A100792-1
RED	A100793-3	A100792-3
GREEN	A100793-5	A100792-5
WHITE	A100793-6	A100792-6
BLUE	A100793-7	A100792-13
BROWN	A100793-8	A100792-7
ORANGE	A100793-4	A100792-4
YELLOW	A100793-2	A100792-2



A100792-1

To order single packaged products add a "K" suffix to the complete part number



Tapping Tee

#### TESTING & CODE COMPLIANCE

- Listed to UL498, file no. E67181
- CSA Certified to C22.2, no. 182.3-M1987, file no. LR13963

#### MATERIAL CHARACTERISTICS

- Body: Rubber
- Environmental: NEMA 3R
- Temperature Rating: -40° C to 105° C